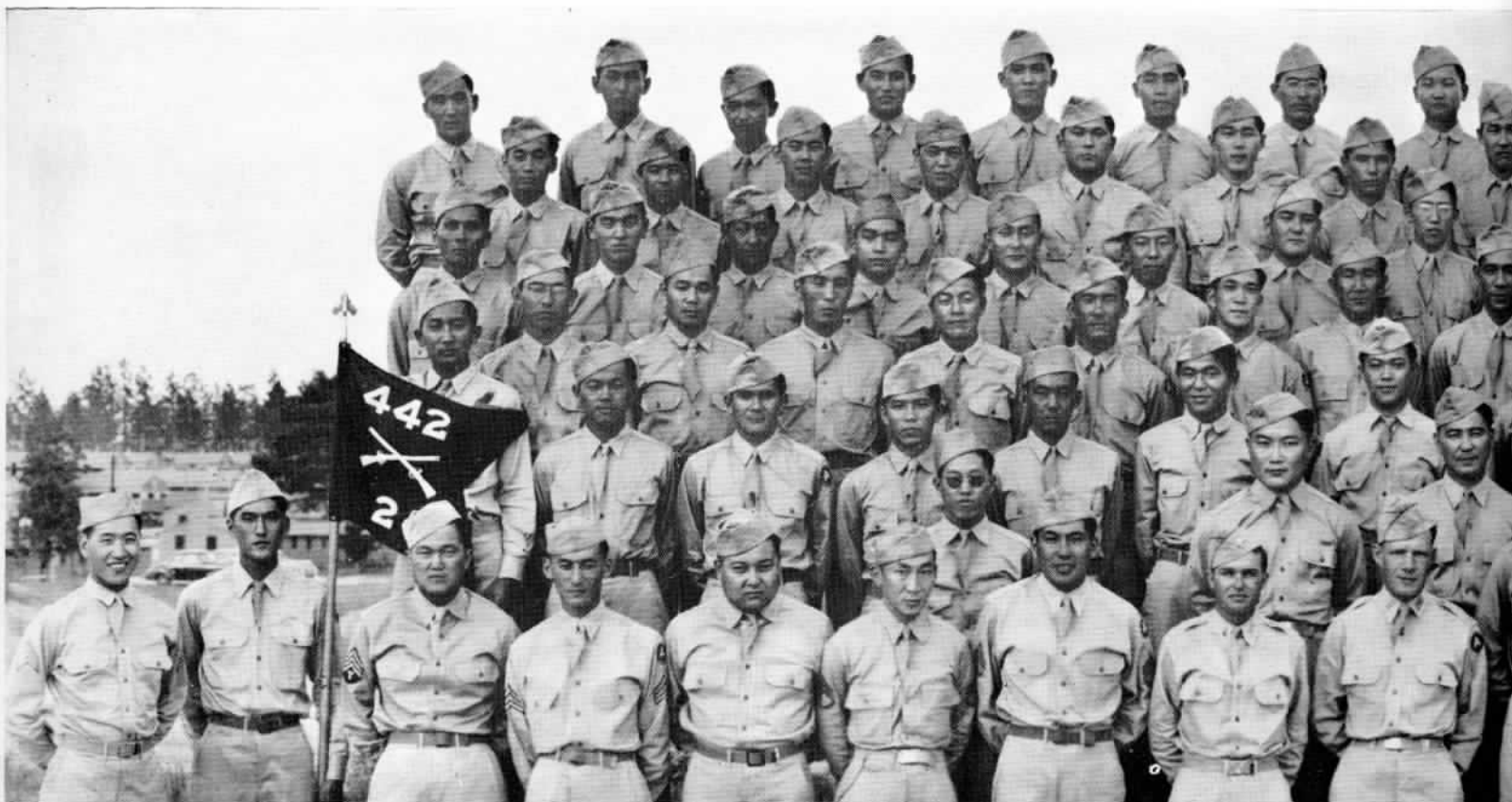




2nd BATTALION STAFF:

l. to r.: Lt. D. E. Rowlands, Capt. F. W. Vowell, Lt. Col. J. M. Hanley, Capt. J. E. Crowley, Lt. A. T. Slater, Lt. C. S. Ushiro.

2nd BATTALION HEADQUARTERS COMPANY





Clockwise:

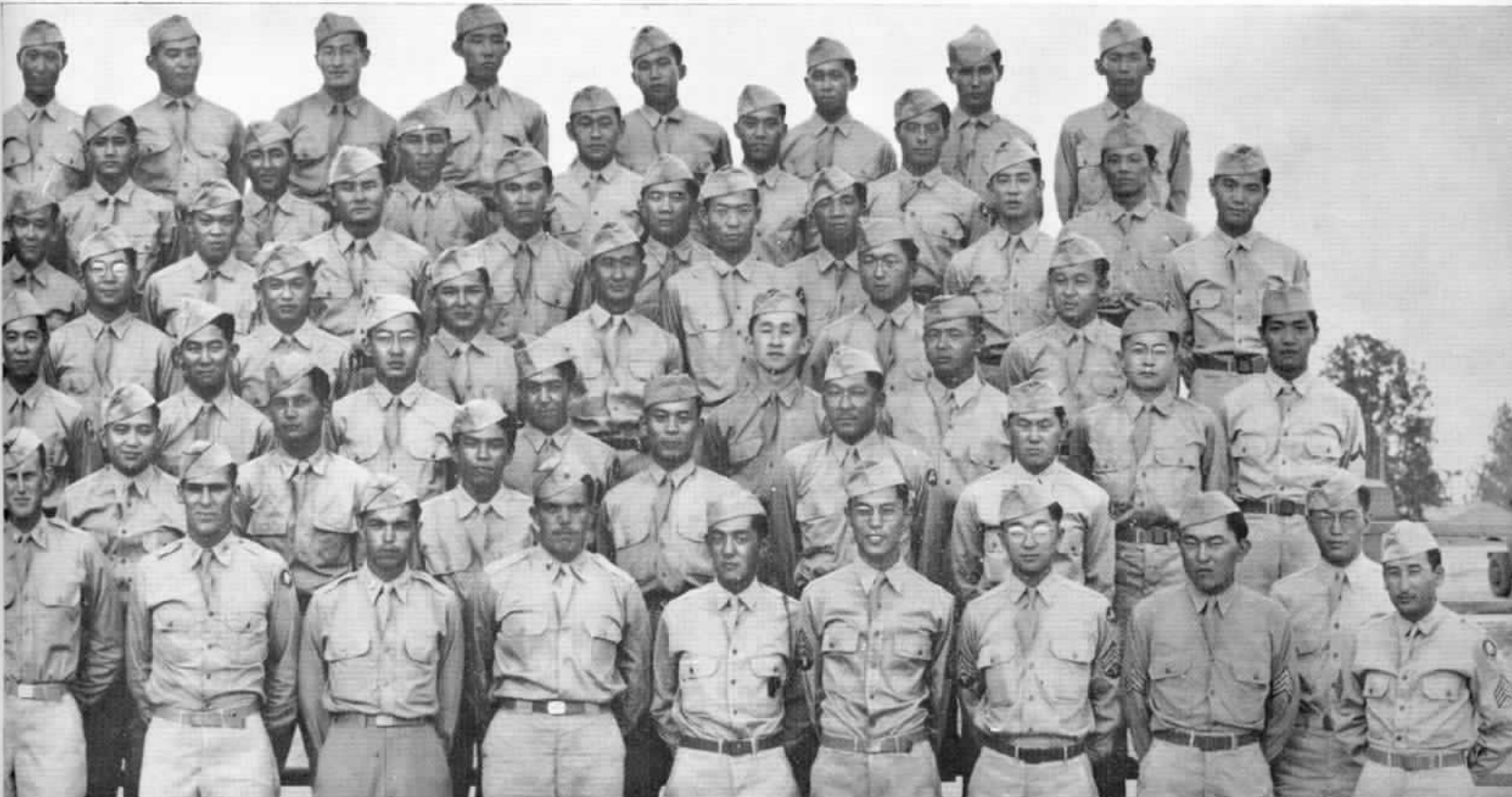
Chow time in the field is just as welcome as back in garrison.

Bivouac during the Fall season is too cool for the men even in sunny Mississippi.

Platoon stands at present arms.



2nd BATTALION HEADQUARTERS COMPANY

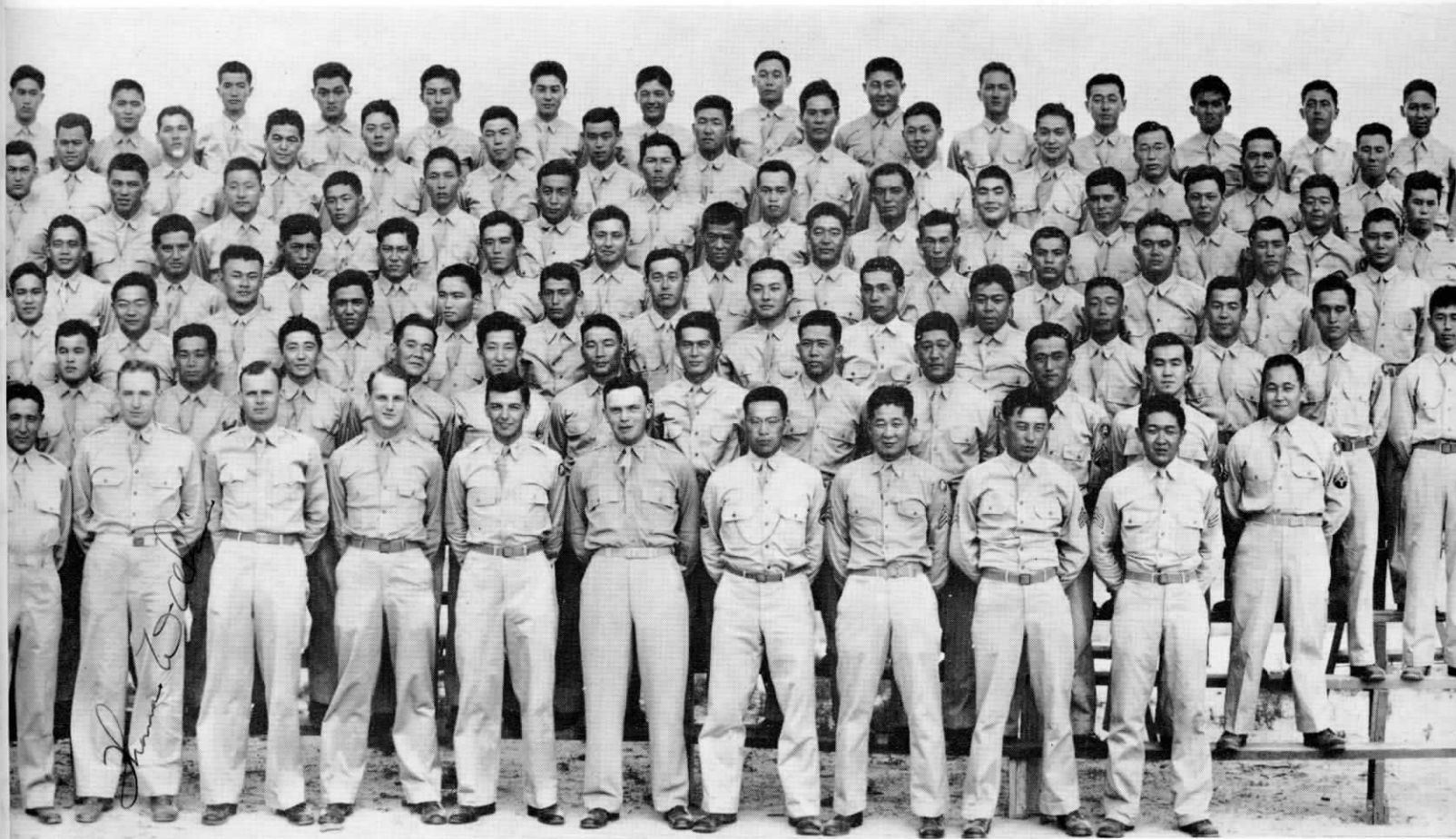




"E" COMPANY

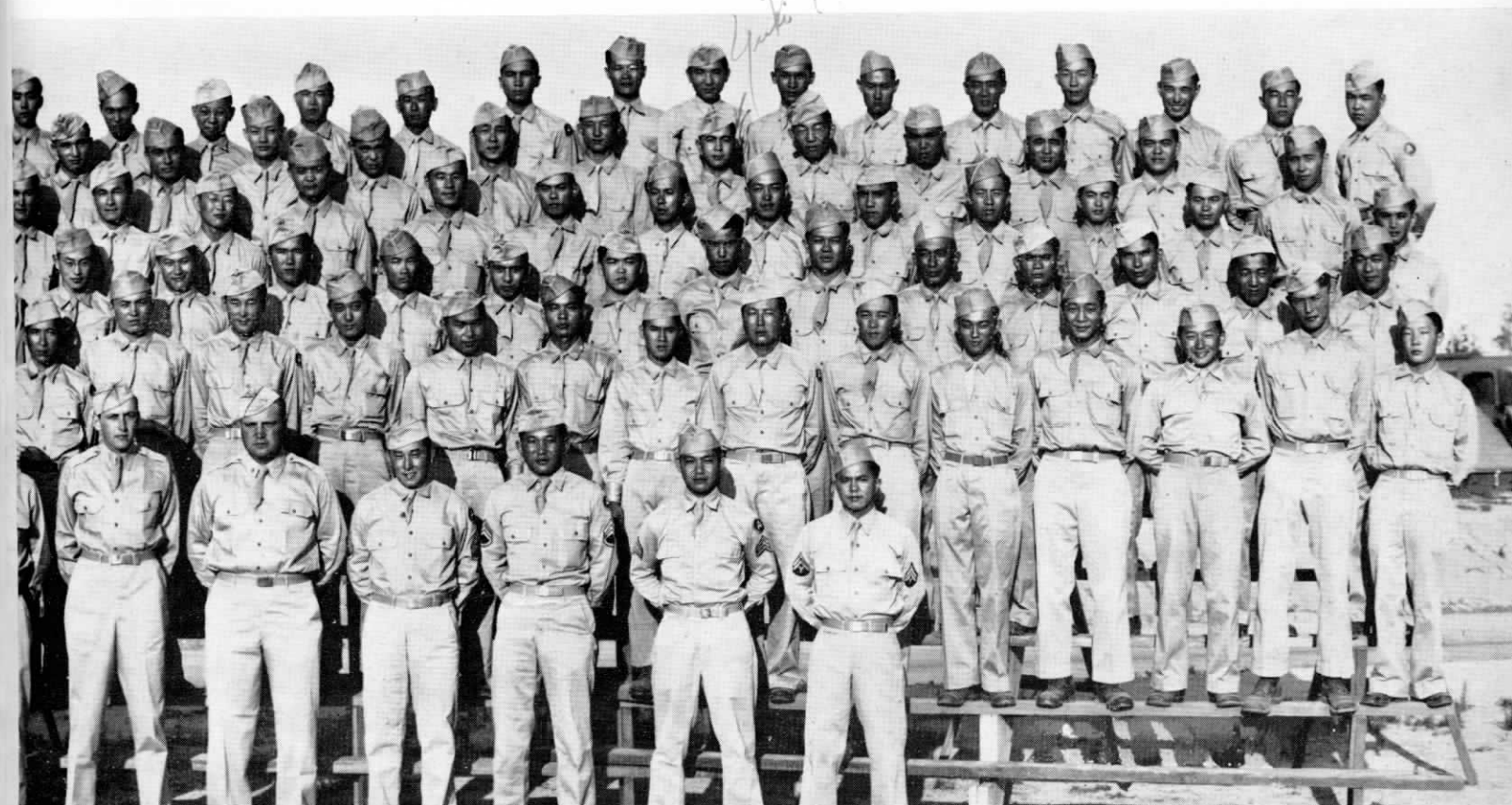
"F" COMPANY

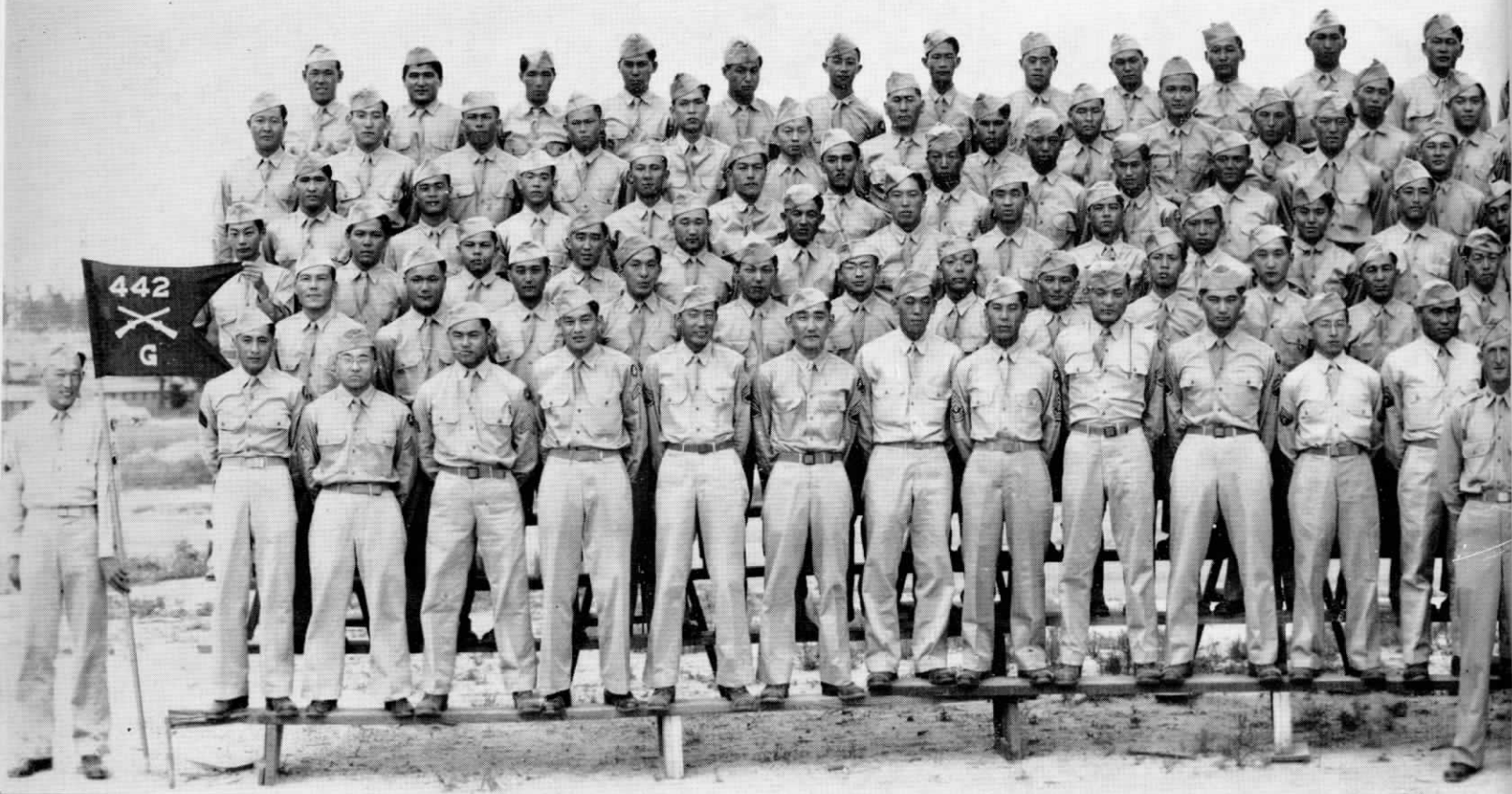




"E" COMPANY

"F" COMPANY





"G" COMPANY

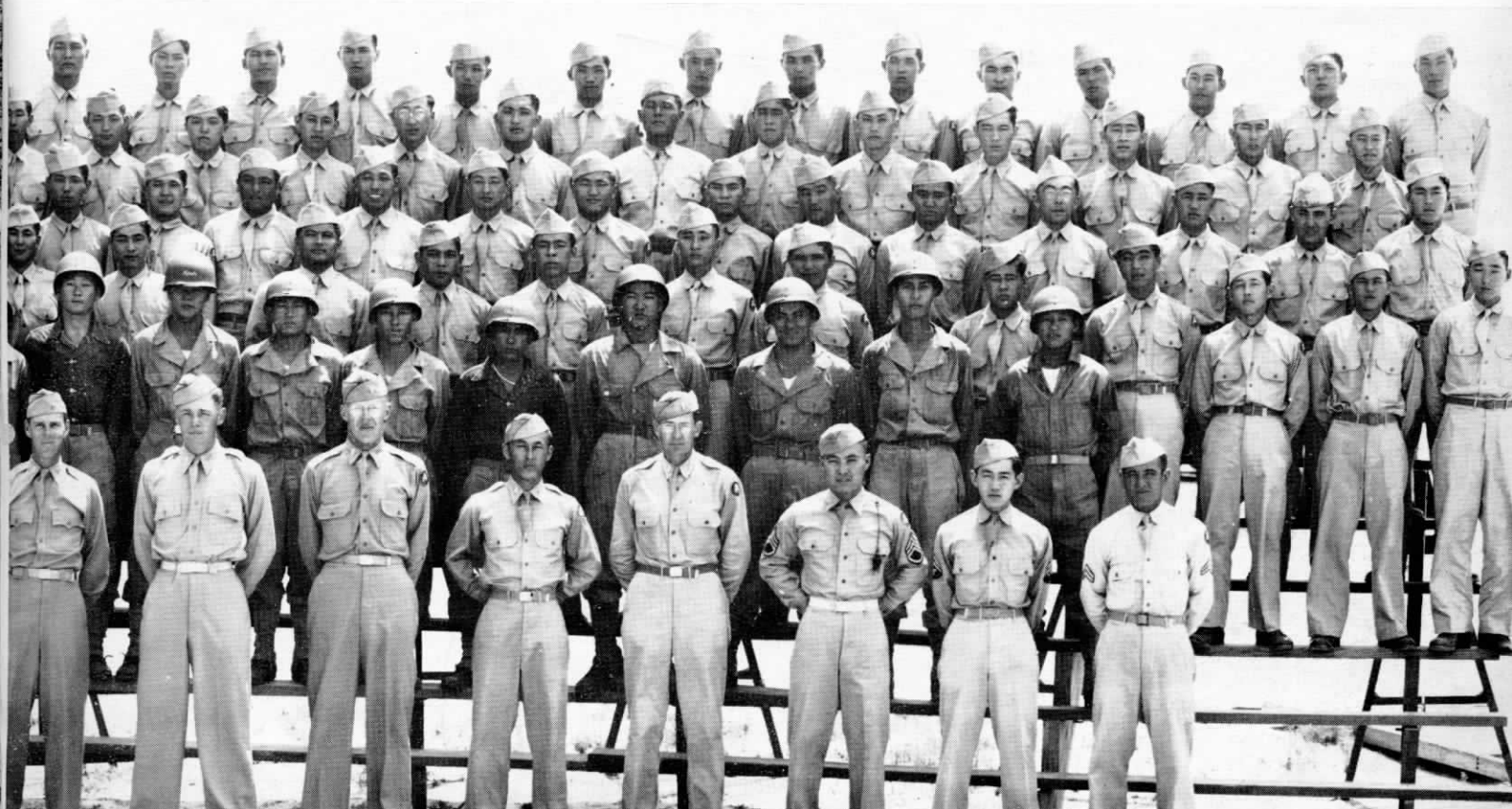
"H" COMPANY

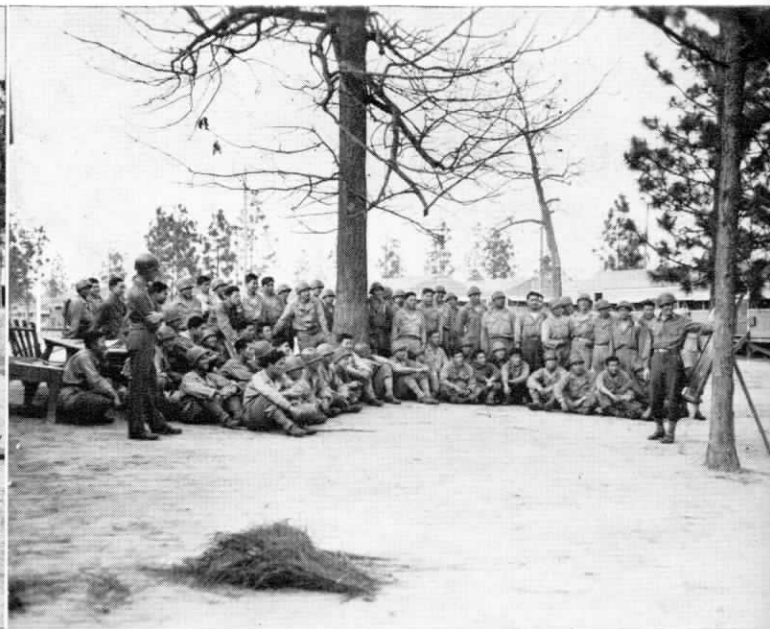




"G" COMPANY

"H" COMPANY





Counter Clockwise:

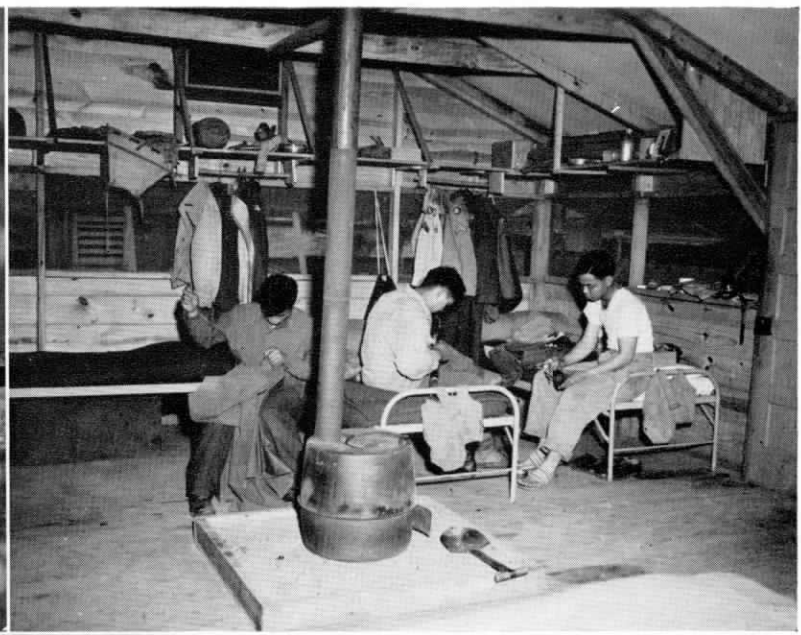
'Now the situation is like this . . .'

Mail call again, packages too.

All NCO's, count them.

This isn't tactical, just a pose.





Ce F. Onda by Rm

Clockwise:

What a time to get thirsty . . . for water.

How some men spend their leisure time.

'No loafing' sign means nothing.

This isn't a surprise pic as you can see.

